



GMT MONTHLY MEMBERSHIP PROGRESS REPORT

Results as of: 3/31/2026

Multiple District 14

LOCATION: PENNSYLVANIA

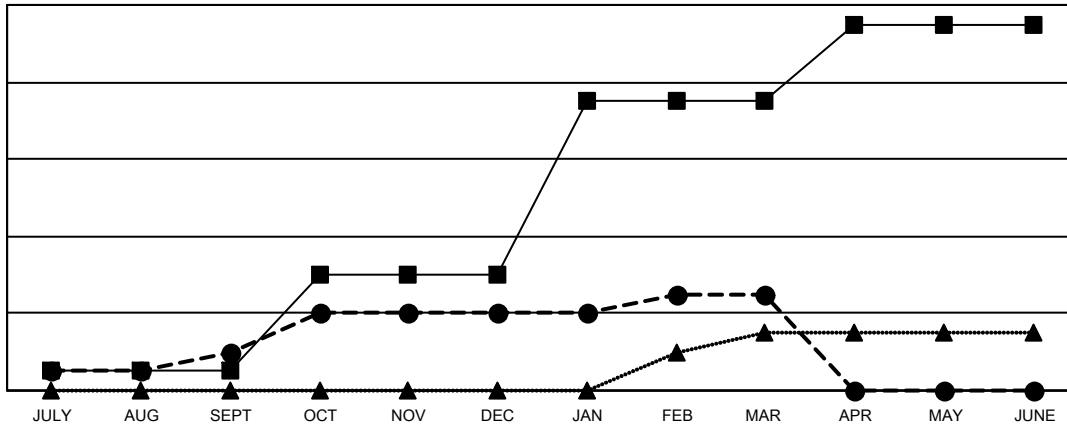
GMT: OPEN

GMT CA 1

Clubs			
RESULTS FOR 2025-2026			
QUARTER	NEW CLUB GOAL	NEW CLUBS	DROPPED CLUBS
JULY/AUG/SEPT	1	2	4
OCT/NOV/DEC	5	2	8
JAN/FEB/MAR	9	1	3
APR/MAY/JUNE	4	0	0

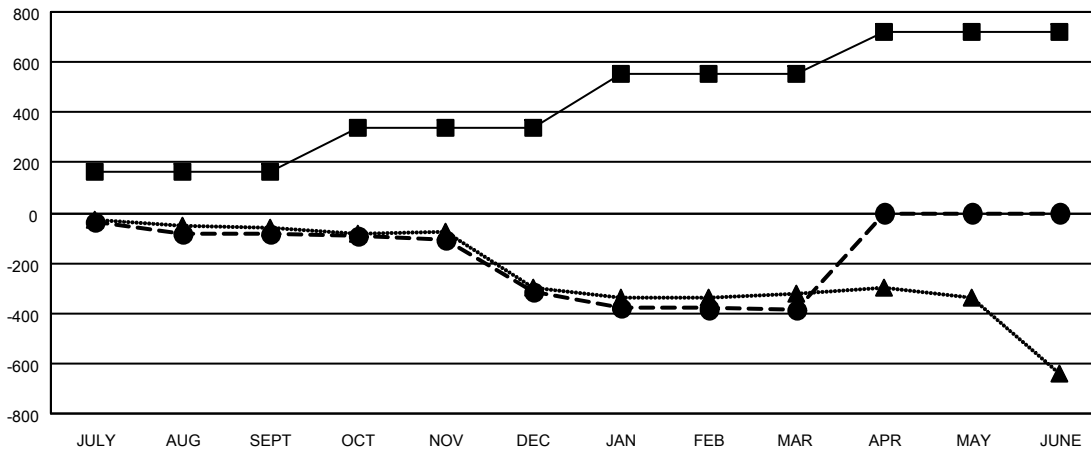
Members			
RESULTS FOR 2025-2026			
QUARTER	MEMBER GROWTH NET GOAL	MEMBER GROWTH ACTUAL	DROPPED MEMBERS ACTUAL (including transfers)
JULY/AUG/SEPT	161	332	359
OCT/NOV/DEC	179	309	513
JAN/FEB/MAR	215	339	367
APR/MAY/JUNE	163	0	0

GOALS AND ACTUAL NEW CLUBS CUMULATIVE



- - CURRENT YEAR GOALS FOR NEW CLUBS
- - CURRENT YEAR ACTUAL NEW CLUBS
- ▲ - LAST YEAR ACTUAL NEW CLUBS

GOALS AND ACTUAL MEMBERS CUMULATIVE



- - MEMBER GROWTH NET GOAL
- - MEMBER GROWTH ACTUAL
- ▲ - LAST YEAR MEMBERSHIP ACTUAL

DROPPED CLUBS: 15	296 CLUBS OF 590 ADDED 1 OR MORE NEW MEMBERS	GENDER DISTRIBUTION
		MALE 9,922 (66.26%)
		FEMALE 5,052 (33.74%)
DROPPED MEMBERS	CLICK HERE FOR CUMULATIVE MEMBERSHIP DATA	TOTAL FAMILY UNIT MEMBERS 3,055
DECEASED 224		FAMILY MEMBERS PAYING HALF DUES 1,593
CLUB CANCELLED 125		
OTHER 887		
TOTAL 1,236		